



# Trimble T100 Tablet

## HIGH PERFORMANCE PROCESSING POWER IN THE FIELD

Trimble brings the advantages of fast computing power and a large screen to the field with the Trimble® T100 Tablet. Integrated GNSS capabilities close the gap between office design and field implementation for design changes, instant approvals and fast communication of changes to field crews. From the field, to the truck cab, to the office, users stay connected, work more and drive less.



Military-grade ruggedness

10-inch (25.4 cm), sunlight readable display lets you read text, graphics and complex 3D models under any field conditions

Long-life internal batteries ensure hours of field computing

Microsoft® Windows® 10 operating system

Compatible with Trimble Siteworks Software

Standardized USB-C ports for charging and data allows for more flexibility

Multi-touch screen works with stylus, fingers, or capacitive gloves

## Key Features

### Military Grade Field Computer

The T100 tablet is built tough to withstand the harsh conditions on a construction site. Unlike modern consumer-grade tablets, the IP65-rated T100 with military-grade ruggedness certification will withstand anything the elements throw at you.

### Seeing is Believing

From performing simple positioning tasks, to monitoring cut/fill information and computing material stockpile volumes, the large 10-inch (25.4 cm) screen reads in bright sunlight to make viewing easier. The high screen resolution makes it easier to see the map details, for more informed decision making.

### All-Day Operation

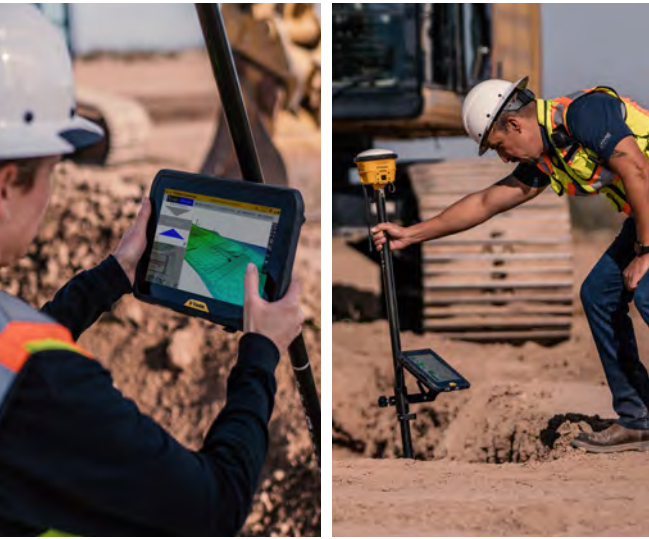
Have confidence that the T100 can get the job done. The long-lasting internal battery enables you to power through the whole day.

### Powerful Processing

The fast and powerful processing engine of the T100 lets you carry out challenging field applications without difficulty, with the capability to become your single solution for both field and office. Rapid processing of maps, satellite imagery and image data ensures the T100 won't slow you down.

### Multi-Purpose Tablet

The T100 works seamlessly with Trimble Siteworks Software, so everyone on the job site can use the same data and work on the same platform. When paired with Trimble Siteworks, the T100 is ideal for construction surveying, stockpile measurements and grade verification. Field managers can use the T100 for planning, site navigation, and reporting tasks.



## HARDWARE FLEXIBILITY

The T100 is designed to operate with Trimble Site Positioning Systems hardware, including the Trimble SPS986 and SPS785 GNSS Smart Antennas, SPS855 GNSS Modular Receiver and SPS series total stations.

- ▶ Multiple bracket sizes allows for different display angles on the pole, enabling users to measure different locations more easily, with maximum flexibility for hard to measure locations
- ▶ Integrated Bluetooth® wireless technology delivers cable-free communication between the T100 and Trimble GNSS receivers
- ▶ Worldwide coverage on 4G LTE networks
- ▶ Add additional functionality with up to two optional user-replaceable Trimble EMPOWER modules, such as a long-range radio or sub-meter GNSS receiver

## USE THE TRIMBLE T100 TABLET AND TRIMBLE SITEWORKS FOR:

- ▶ Measuring and verifying original ground levels and site features
- ▶ Monitoring real-time cut/fill information
- ▶ Checking finished grade and laid material thickness against design elevations and tolerances
- ▶ Computing progress and material stockpile volumes
- ▶ Monitoring and conducting quality control for earthworks and paving operations
- ▶ Assessing as-built measurements and generating high quality reports for record keeping, approvals and payment purposes
- ▶ Synchronizing design and field data via the internet

## USING THE TRIMBLE T100 TABLET FIELD MANAGERS CAN:

- ▶ Make decisions faster, reinforced by accurate documentation
- ▶ Reduce the dependency on the surveyor by performing simple positioning tasks
- ▶ Access up-to-date data to support decision-making
- ▶ Increase production, reduce rework, and document work quality
- ▶ Improve communications between the field and office by connecting more people on the job site



**SITECH NorCal**  
 833 Montague Ave.  
 San Leandro, CA 94577  
**888-4-A-LASER**  
[www.SITECHnorcal.com](http://www.SITECHnorcal.com)

**SITECH Oregon**  
 21505 Bents Court NE  
 Aurora, OR 97002  
**503-280-1505**  
[www.SITECHoregon.com](http://www.SITECHoregon.com)



**TRIMBLE CIVIL CONSTRUCTION**  
 10368 Westmoor Drive  
 Westminster CO 80021 USA  
 800-361-1249 (Toll Free)  
 +1-937-245-5154 Phone  
[construction\\_news@trimble.com](mailto:construction_news@trimble.com)

© 2021, Trimble Inc. All rights reserved. Trimble, the Globe & Triangle logo and Connected Site are trademarks of Trimble Inc., registered in the United States and in other countries. Microsoft and Windows are either registered trademarks or trademarks of Microsoft Corporation in the United States and/or other countries. The Bluetooth word mark and logos are owned by the Bluetooth SIG, Inc. and any use of such marks by Trimble Inc. is under license. Wi-Fi is a registered trademark of the Wi-Fi Alliance. All other trademarks are the property of their respective owners. PN 022482-4308 (04/21)